


Can or should AO be implemented in all European Countries, and should we choose one model?

Mike Firn



South West London and St George's 
Mental Health NHS Trust

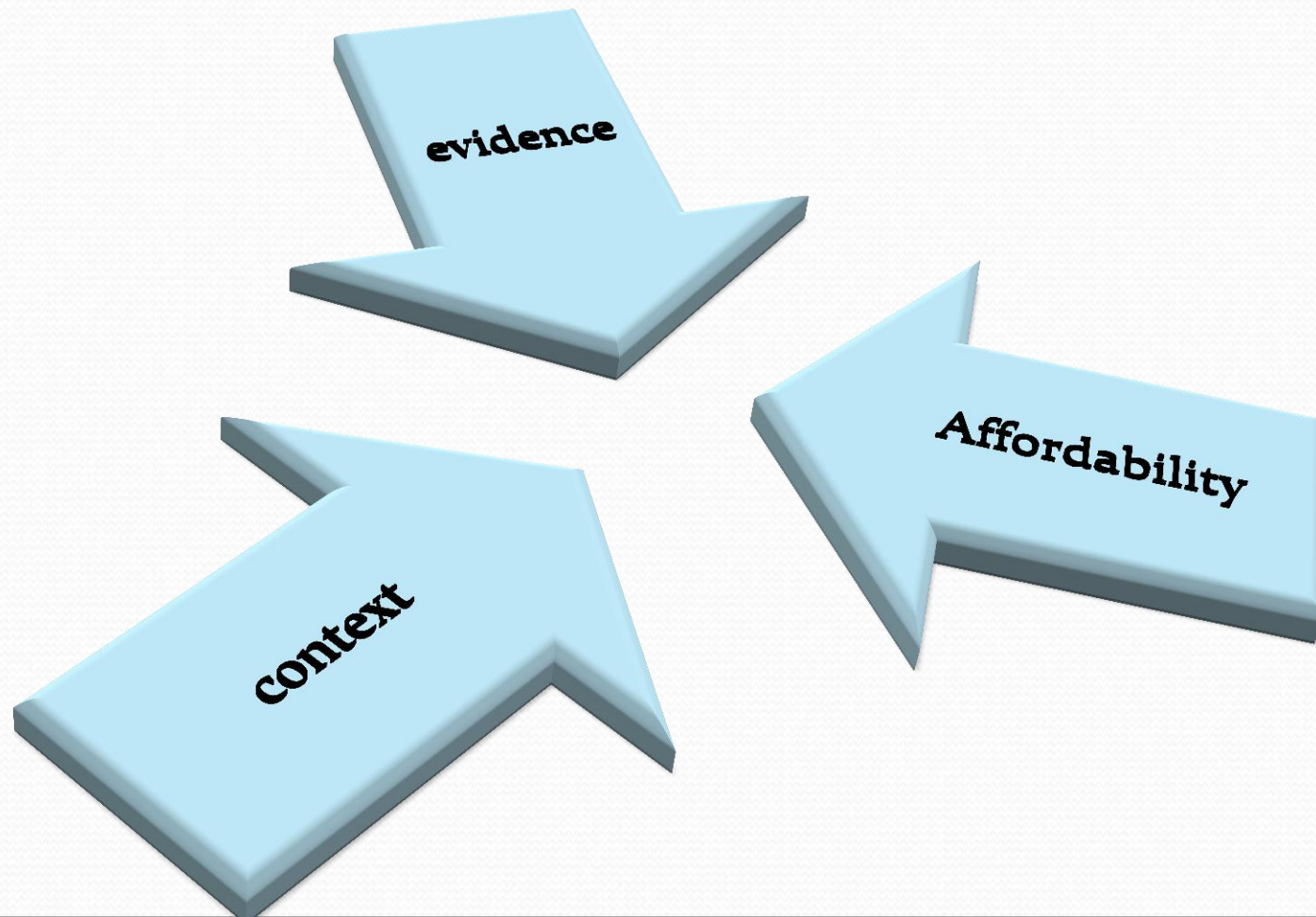


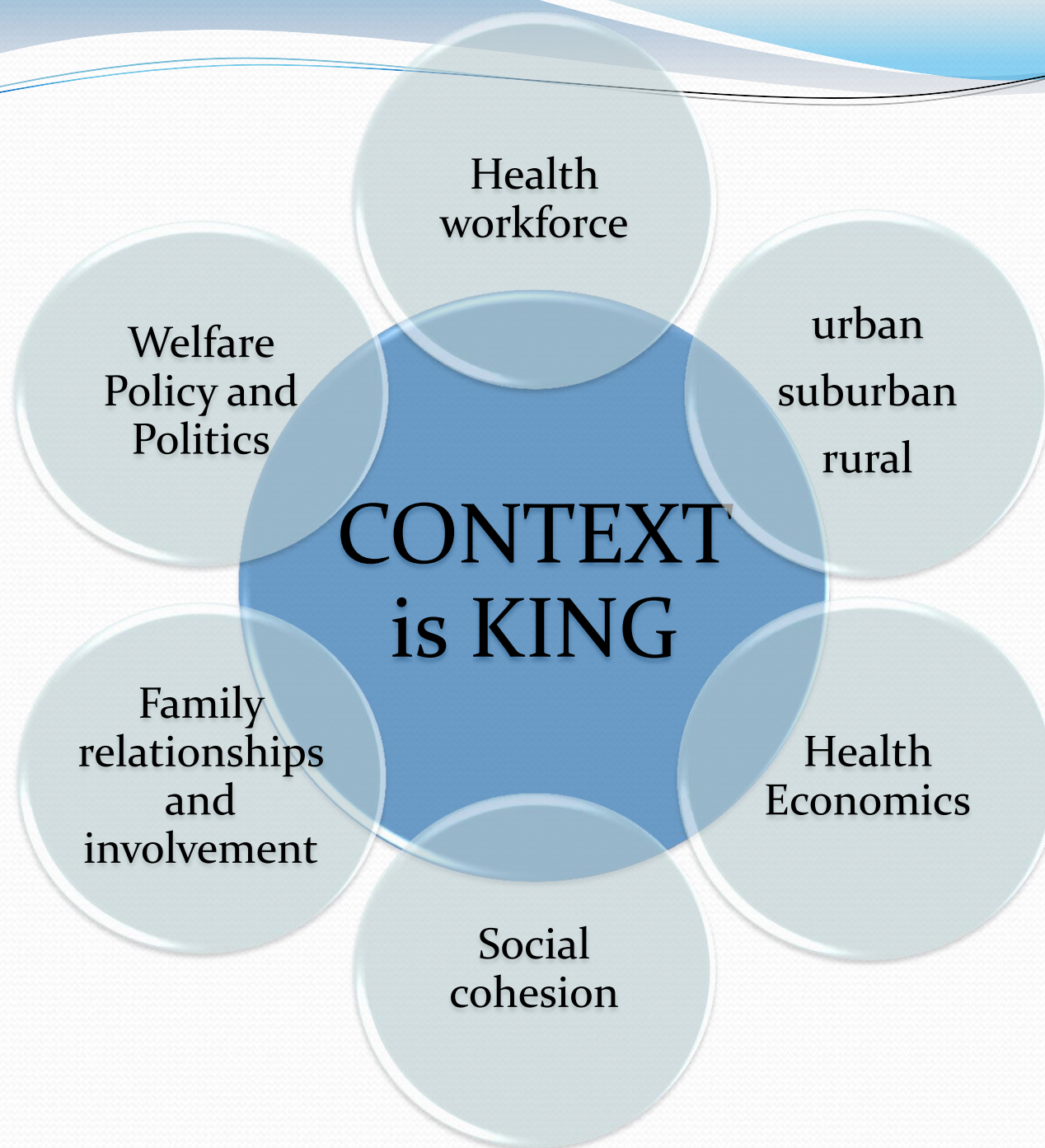
Cheri Sixbey



Crossing Borders

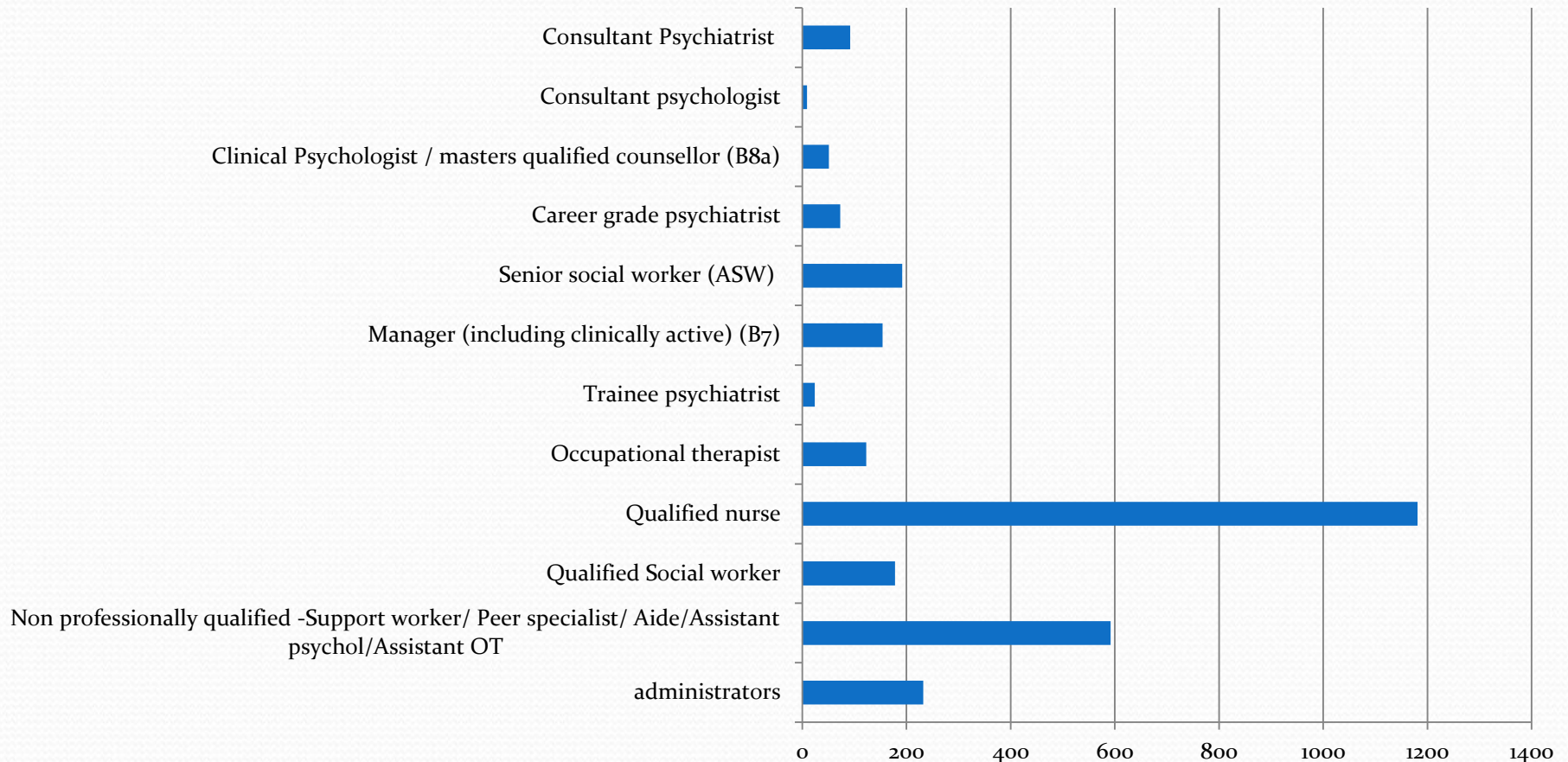
Model Fidelity versus Flexibility





Workforce profiles

ACT Staffing England March 2009 (total staff 2995 in 248 teams)



Patterns of family living & types of housing available vary greatly

Thornicroft and Tansella (2004)

Living Situation- persons with schizophrenia	Santander n=100	Verona n=107	Amsterdam n=61	London n=84
solo	7%	15%	49%	42%
With partner	17%	25%	8%	17%
With relatives	72%	50%	20%	20%
With others	4%	10%	23%	21%

The problem with fidelity scales

Mixture of expert opinion and evidence

Valid only for a period in time (evidence changes)

- Stein and Test's notion that ACT should be time unlimited appears impractical (cost) and unnecessary (long term evidence of recovery)
- All commentators now agree that full ACT model impractical in rural populations.

Bond & Drake commentary on FACT 2007.

The problem with fidelity scales

Valid only within a social and political geography

Team staffing

- Cost and labour supply varies
- Specialist in housing, employment, substance misuse, social care

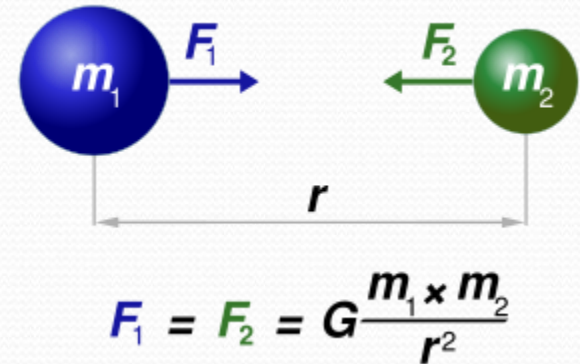
Team organisation

- Hours of operation
- Consumer worker on team

Legal

- Assertive mechanisms

What are the universal constants for ACT?



A much shorter list than any fidelity scale

- Frequent contact (compared to what)
- In vivo services
- Team approach
- Multidisciplinary teams
- Focus on engagement
- Health and social care

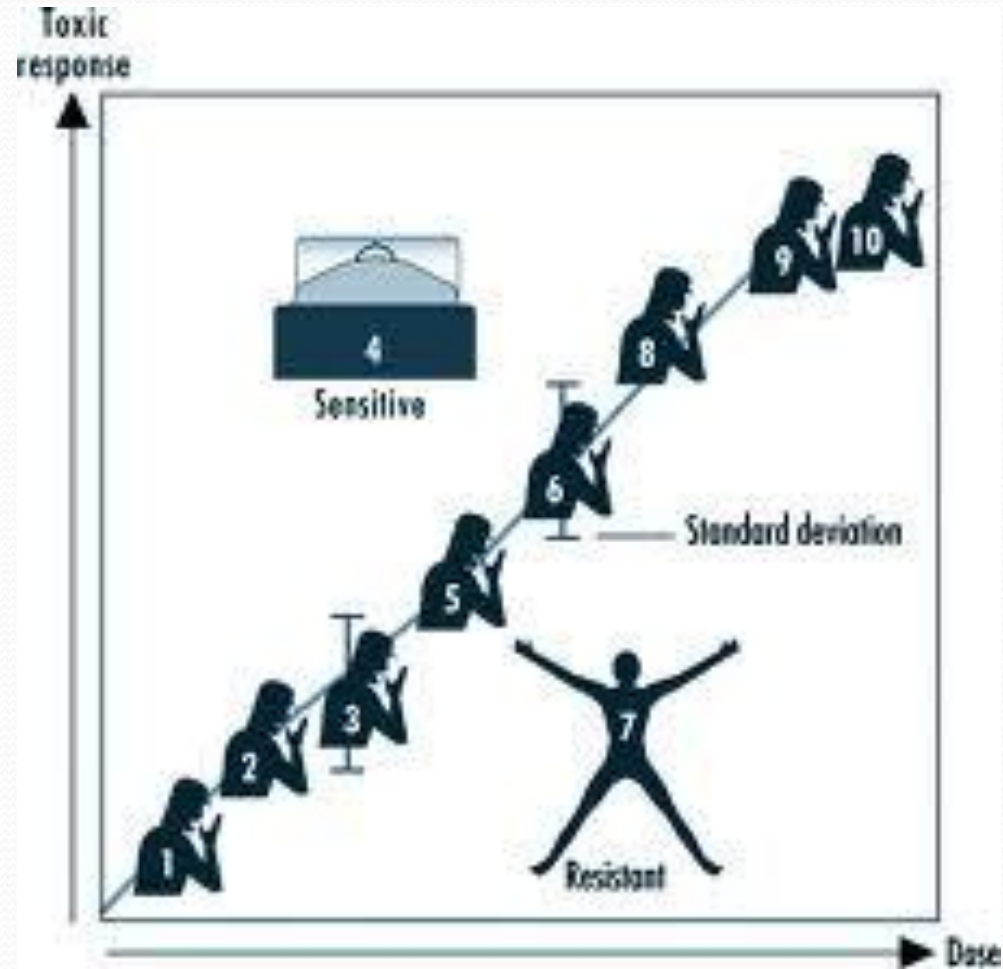


Mandating one model is as ambitious and perhaps as idealistic as where we find ourselves with the European single currency.

Nice in theory but the more you consider how different our contexts are the more problems arise

Idiosyncratic and dose response

- We are familiar with the concepts in our patients when it comes to medication.
- The treatment for one patient does not suit the other



The post modern sensibility

- it's all relative*
- alles ist relativ*
- het is allemaal
relatief*
- todo es relativo*
- alt er relativt*
- kaikki on
suhteellista*

